



SENSECURE

INTEGRATED SOLUTIONS PVT. LTD.

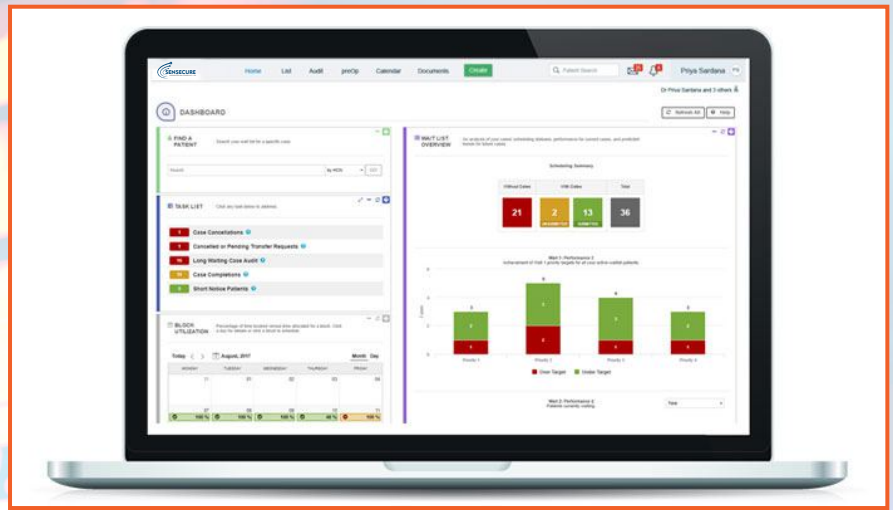
TRAFFIC MANAGEMENT SYSTEM

www.sensecure.in, www.sensecure.uk

Oceanic-ATC

OVERVIEW

Oceanic-ATC -Traffic Management System enables transportation professionals to pro-actively manage traffic flow and promote mobility through real-time traffic data collection and management tools. Built around user input and decades of industry knowledge and expertise, the modern architecture of oceanic-ATC is designed to meet the demands of today's transportation network. With a simple, yet powerful means of collecting and displaying information for all system components, and access to data anytime, oceanic -ATC will take your traffic operations to new heights.



BENEFITS

- Monitors system-wide traffic conditions and devices
- Commands innovative control strategies
- Analyzes performance and trends
- Enables proactive management
- Centralizes documentation and inventory control
- Ensures system integrity through data validation
- Boosts accountability through user security, controller and activity logs
- Empowers users with data, accessible via web enabled devices
- Connects communities and jurisdictions

Product Description

- Oceanic-ATC provides dependable monitoring and control of signalized intersections in small and large environments. Intuitive and user-friendly, oceanic-ATC is easy to learn, use, and customize; allowing it to quickly be implemented and mastered.
- The newest release of Oceanic-ATC offers users 24/7 access to real-time system data from any web-enabled device; opening the door to cloud-based hosting and integration with other jurisdictions and community outreach programs. Designed in compliance with NTCIP standards and featuring built-in support for select legacy firmware, Oceanic-ATC offers agencies a viable and cost-effective migration path to modern technology. Plus, its dynamic platform is capable of adapting with your needs as they evolve. Best of all, the robust data collection and control strategies help reduce congestion and harmful emissions in accordance with requirements for federal and state funding initiatives.

Oceanic-ATC

Oceanic-ATC is a powerful combination of standard-compliant technology, advanced algorithms, and tried-and-true methodology.

SYSTEM FUNCTIONALITY

Monitor System-Wide Traffic & Devices

- Survey traffic conditions remotely
- Monitor system-wide device status in real-time
- Log detailed intersection operations
- Receive instant notifications of device or traffic
- Performance issues
- Record user activity and controller access

Analyze Traffic Trends

- Measure performance for individual intersections and co-ordinated systems
- Generate reports on current or historic trends, and performance measures
- Analyze vehicular, pedestrian, and transit signal priority data

Implement Control Strategies

- Command controller operations
- Modify phase sequence and pattern in response to specific traffic conditions
- Reduce congestion and increase efficiency

Manage Assets, Tasks & Users

- Schedule controller operations, device log retrieval and event notification from one central scheduler
- Consolidate system-wide information in central database Track assets and inventory
- Enforce system security through unique user permissions
- Reduce inefficiencies and issues related to mis-management of controller timing
- Verify and validate timing parameters